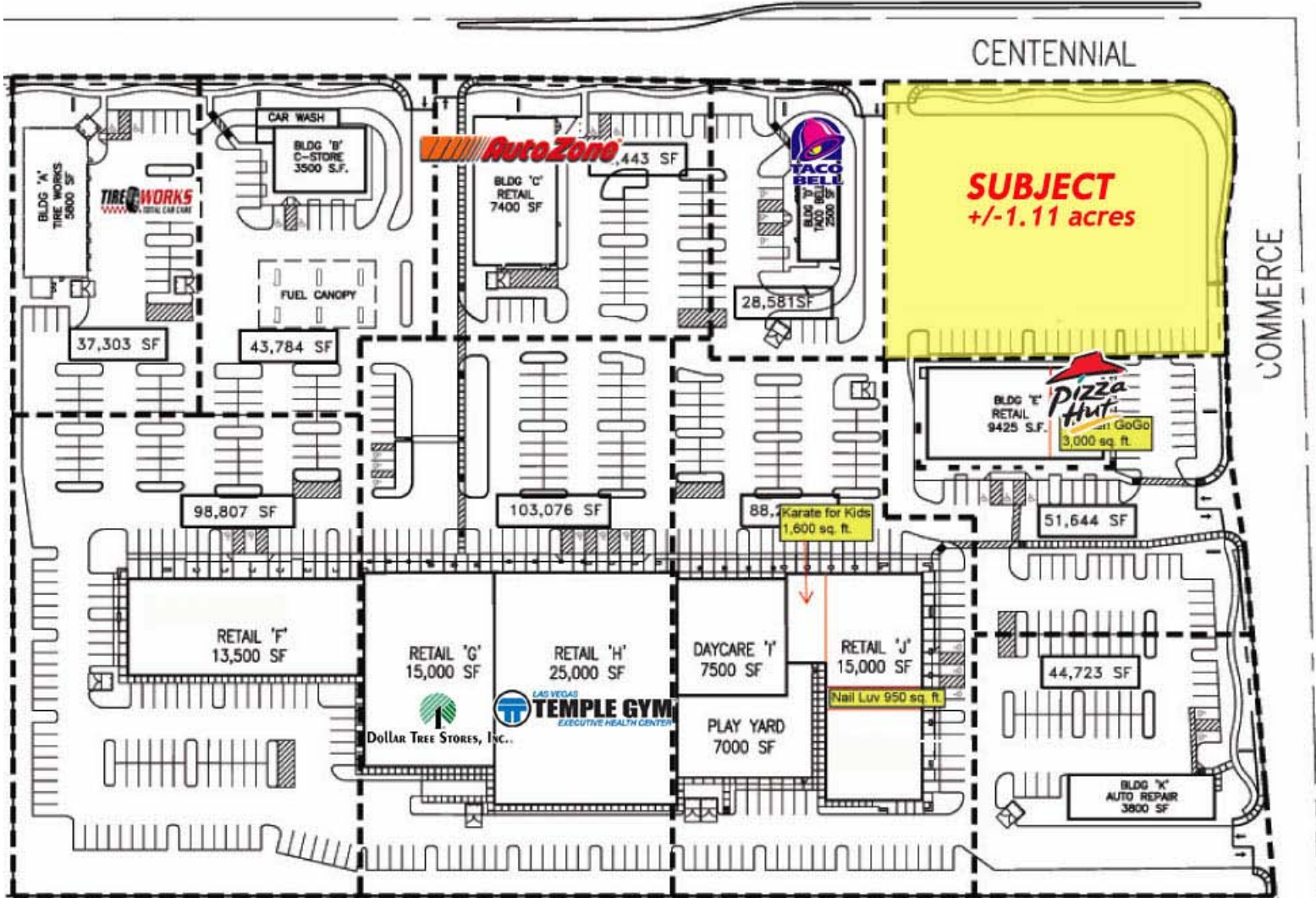


HARD CORNER PARCEL FOR SALE

SWC Centennial Pkwy & Commerce St | North Las Vegas 89031

Site Plan



Subject area viewed along Commerce St

FOR MORE INFORMATION:

TODD BOYER
tboyer@roicre.com
702.363.3100



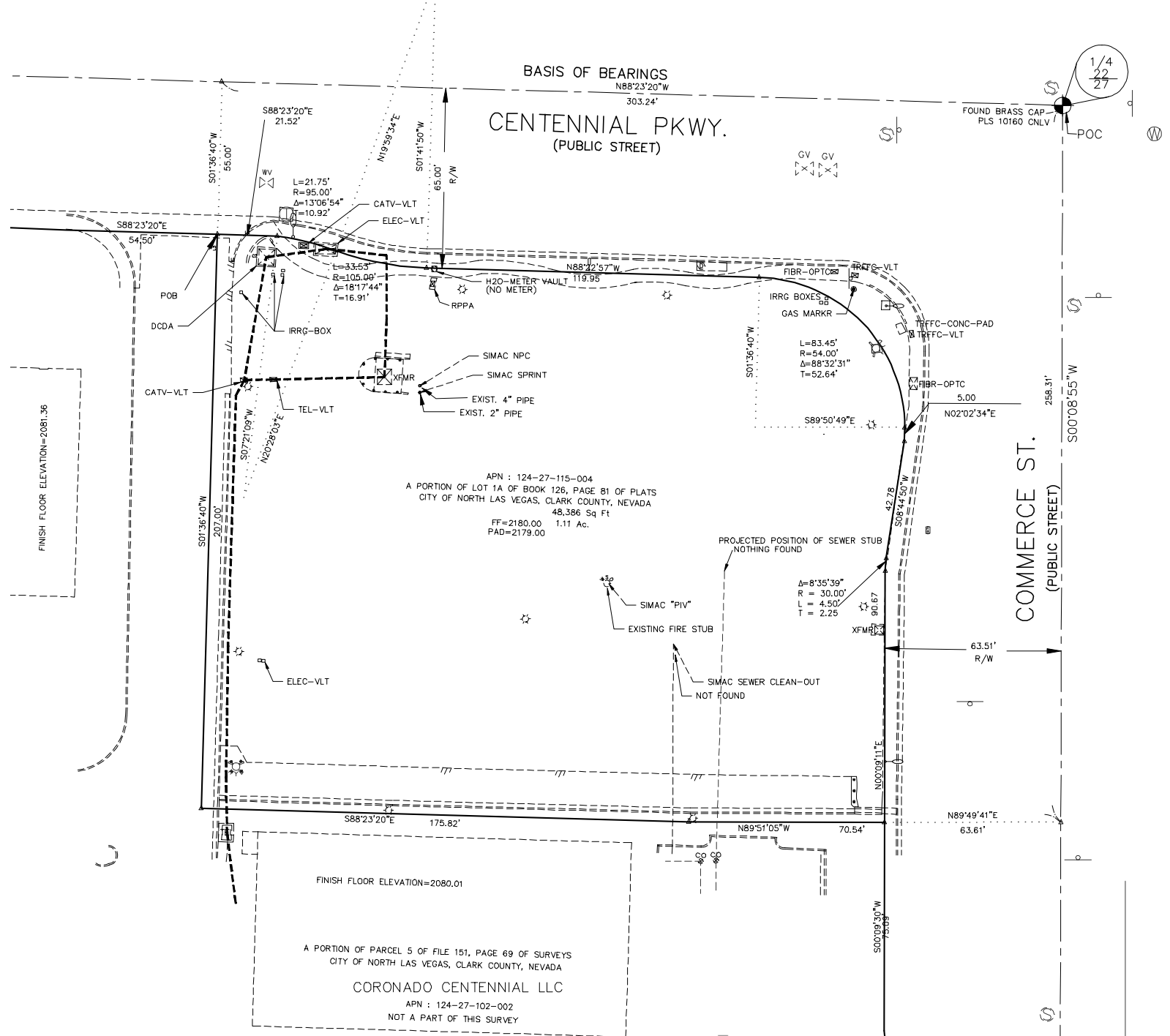
7100 W Smoke Ranch Rd
 Suite 100
 Las Vegas, NV 89128

Phone: 702.363.3100
 Fax: 702.363.0450
 www.roicre.com

HARD CORNER PARCEL FOR SALE

SWC Centennial Pkwy & Commerce St | North Las Vegas 89031

Parcel Boundary



APN : 124-27-115-004
 A PORTION OF LOT 1A OF BOOK 126, PAGE 81 OF PLATS
 CITY OF NORTH LAS VEGAS, CLARK COUNTY, NEVADA
 48,386 Sq Ft
 FF=2180.00 1.11 Ac.
 PAD=2179.00

FINISH FLOOR ELEVATION=2080.01
 A PORTION OF PARCEL 5 OF FILE 151, PAGE 69 OF SURVEYS
 CITY OF NORTH LAS VEGAS, CLARK COUNTY, NEVADA
CORONADO CENTENNIAL LLC
 APN : 124-27-102-002
 NOT A PART OF THIS SURVEY

FOR MORE INFORMATION:

TODD BOYER
tboyer@roicre.com
702.363.3100



7100 W Smoke Ranch Rd
 Suite 100
 Las Vegas, NV 89128

Phone: 702.363.3100
 Fax: 702.363.0450
 www.roicre.com